

CONDENSATE COLLECTION TANK

Acceptance at the workshop:
according to the European Pressure Equipment Directive PED (2014/68/EU)

CE-Marking on the Pressure Vessel:
according to the European Pressure Equipment Directive PED (2014/68/EU)

Design code: EN 12953

Designation of the condensate collection tank

The condensate collection system is used for sound and failure-free operation of the condensate system. This system is required for collection of condensate coming from steam users. The system reduces heating and feedwater treatment energy consumption.

Where required, the pump module for condensate pumping and incoming condensate automated quality control system can be included in the supply package.

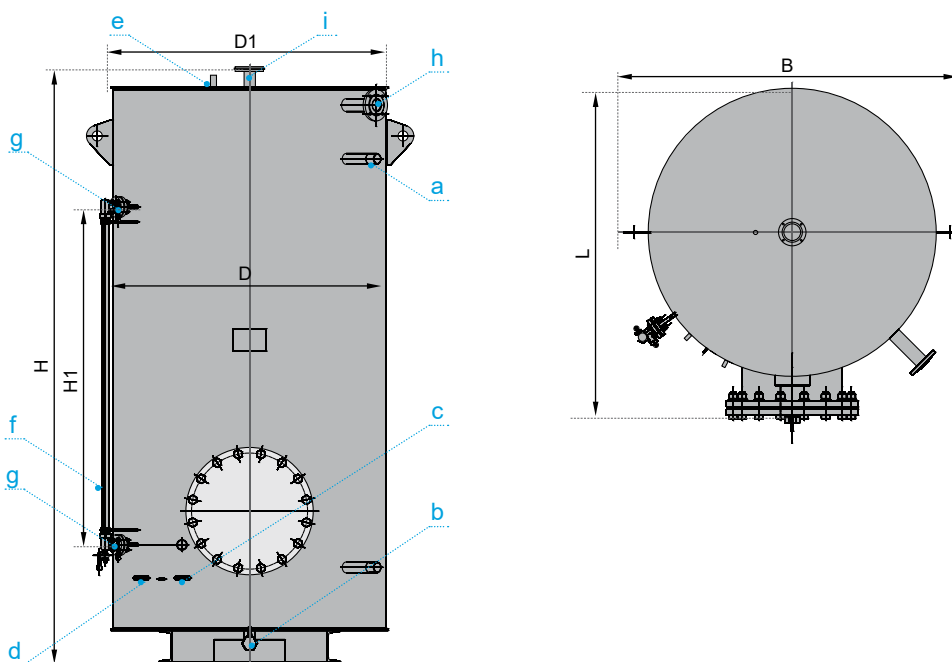


Condensate collection tank

Technical specifications

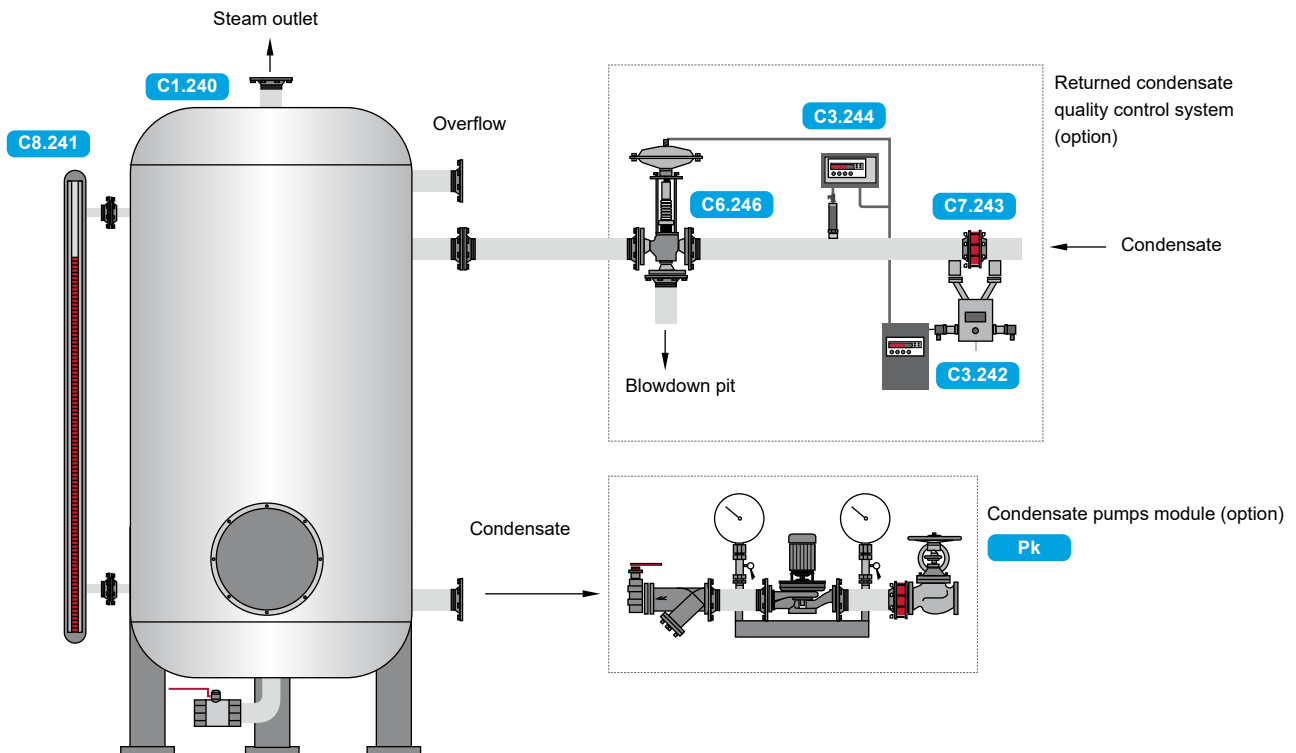
Characteristics	Volume							
	1	1.5	2	2.5	4	6	8	10
Process fluid	water							
Fluid pressure	filling							
Average operating temperature	from +5 to +70 °C							
Reservoir type	vertical							
Weight, kg	425	527	632	694	960	1160	1396	1609

Overall and mounting dimensions



Characteristics		Volume							
		1	1.5	2	2.5	4	6	8	10
Water inlet (outlet)	a	G 1½ — B							50
Water drain	b	G 1½ — B							65
Temperature transducer union fitting	c	G ½							G 1½ — B
Condensate sampling union fitting	d	G ½							50
Pressure vacuum gauge union fitting	e	G ½							50
Flowmeter union fitting, DN, mm	f, g	10							25
Overfilling, DN, mm	h	50							—
Steam vent, DN, mm	i	50							—
Distance, mm	D	1012	1012	1212	1212	1212	1612	1612	1812
Distance, mm	D1	1032	1032	1232	1232	1232	1632	1632	1832
Distance, mm	H	1726	2406	2306	2655	4002	3245	4236	4328
Distance, mm	H1	950	1500	1450	1500	1500	1500	1500	2800
Distance, mm	L	1190	1190	1390	1390	1390	1789	1789	2019
Distance, mm	B	1482	1482	1682	1682	1682	2082	2082	2048

Condensate collection tank



Pk Condensate pumps

C3.242 Turbidity transducer with automation unit

C7.243 Check valve

C1.240 Condensate collection tank

C3.244 Salt content transducer with automated unit

C6.246 Quick-response pneumatic 3-way valve

C8.241 Sight level indicator with 4–20 mA transducer